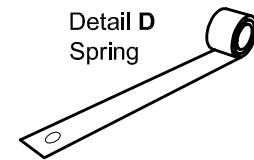
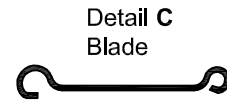
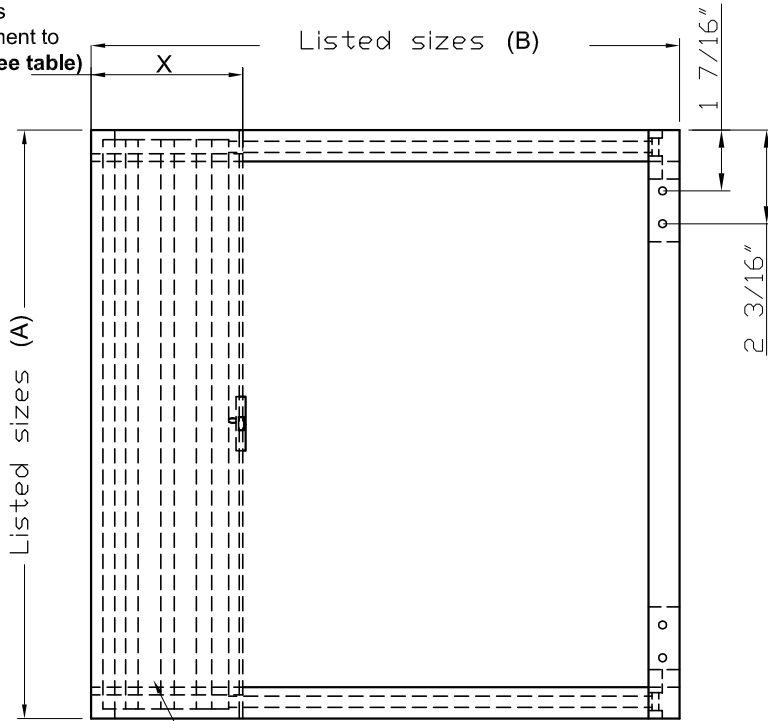




MODEL L-FDH-1

MODEL FIRE DAMPER - HORIZONTAL MOUNT

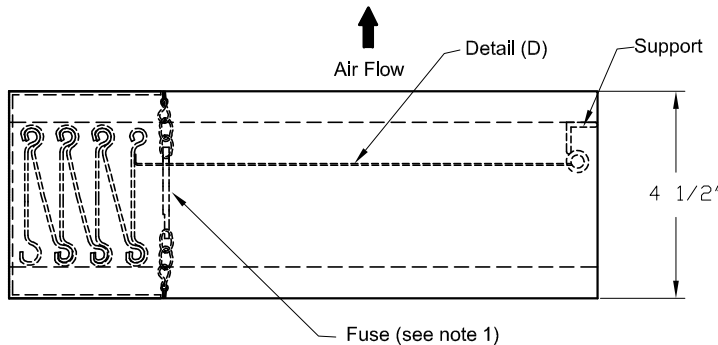
X it varies in agreement to size B (see table)



Blade see Detail (C)

HORIZONTAL MOUNT

Listed size (B)	X=
	Inch
6"	1 13/32
8"	1 11/16
10"	1 31/32
12"	1 31/32
14"	2 1/4
16"	2 17/32
18"	2 13/16
20"	3 3/32
22"	3 3/8
24"	3 21/32
26"	3 15/16
28"	3 15/16
30"	4 7/32
32"	4 1/2



Finish Galvanized

Note 1: to use fuse of 165°F or fuse of 386°F  
 Note 2: Available in sizes with single section (A) x (B): 6"x6" to 22" x 32" different consulting engineering

Dimensions are in inches

MODEL L-FDH-1

**FRAME:** GALV. STEEL CAL. 20  
**BLADE:** GALV. STEEL CAL. 22

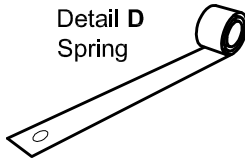
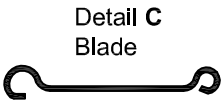
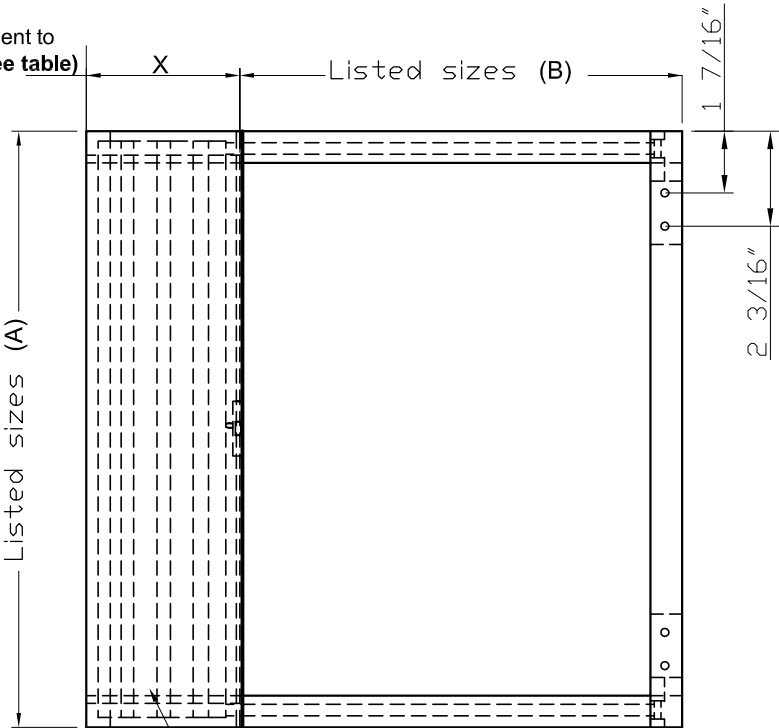
Job Name: \_\_\_\_\_  
 Location: \_\_\_\_\_

Architect: \_\_\_\_\_  
 Engineer: \_\_\_\_\_  
 Contractor: \_\_\_\_\_

MODEL L-FDH-2

MODEL FIRE DAMPER - HORIZONTAL MOUNT

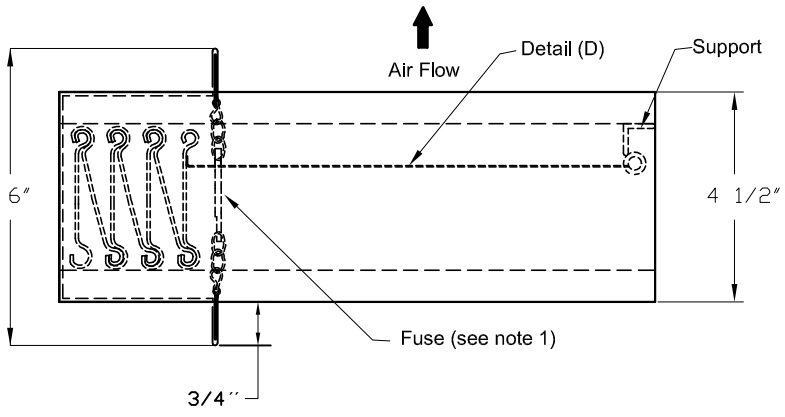
X it varies in agreement to size B (see table)



Blade see Detail (C)

HORIZONTAL MOUNT

Listed size (B)	X= Inch
6"	1 13/32
8"	1 11/16
10"	1 31/32
12"	1 31/32
14"	2 1/4
16"	2 17/32
18"	2 13/16
20"	3 3/32
22"	3 3/8
24"	3 21/32
26"	3 15/16
28"	3 15/16
30"	4 7/32
32"	4 1/2



Finish Galvanized

Note 1: to use fuse of 165°F or fuse of 386°F  
 Note 2: Available in sizes with single section (A) x (B): 6"x6" to 22" x 32" different consulting engineering

Dimensions are in inches

MODEL L-FDH-2

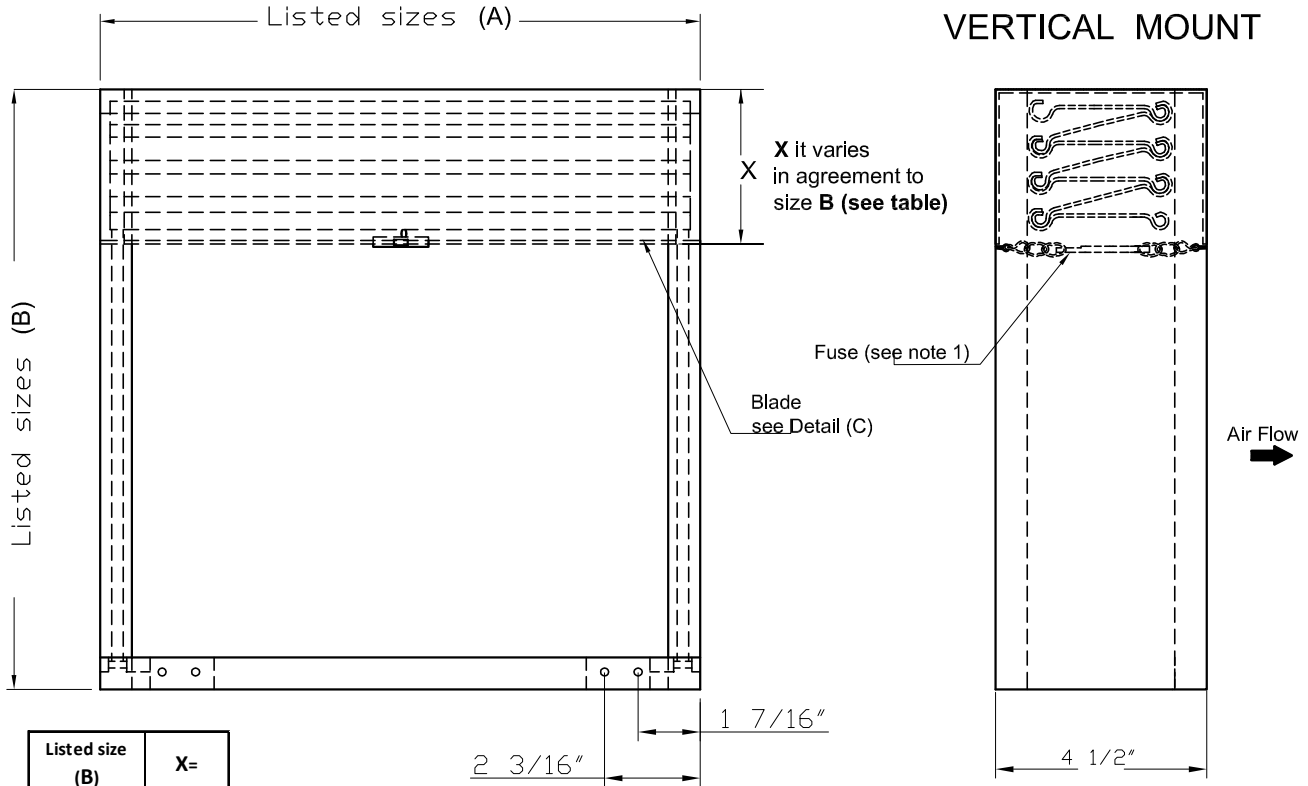
**FRAME: GALV. STEEL CAL. 20**  
**BLADE: GALV. STEEL CAL. 22**

Job Name: \_\_\_\_\_  
 Location: \_\_\_\_\_

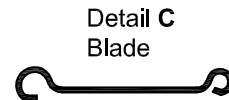
Architect: \_\_\_\_\_  
 Engineer: \_\_\_\_\_  
 Contractor: \_\_\_\_\_

MODEL L-FDV-1

MODEL FIRE DAMPER - VERTICAL MOUNT



Listed size (B)	X=
	Inch
6"	1 13/32
8"	1 11/16
10"	1 31/32
12"	1 31/32
14"	2 1/4
16"	2 17/32
18"	2 13/16
20"	3 3/32
22"	3 3/8
24"	3 21/32
26"	3 15/16
28"	3 15/16
30"	4 7/32
32"	4 1/2



Finish  
Galvanized

Note 1: to use fuse of 165°F or fuse of 386°F  
Note 2: Available in sizes with single section (A) x (B): 6"x6" to 22" x 32" different consulting engineering

Dimensions are in inches

MODEL L-FDV-1

**FRAME:** GALV. STEEL CAL. 20  
**BLADE:** GALV. STEEL CAL. 22

Job Name: \_\_\_\_\_

Architect: \_\_\_\_\_

Location: \_\_\_\_\_

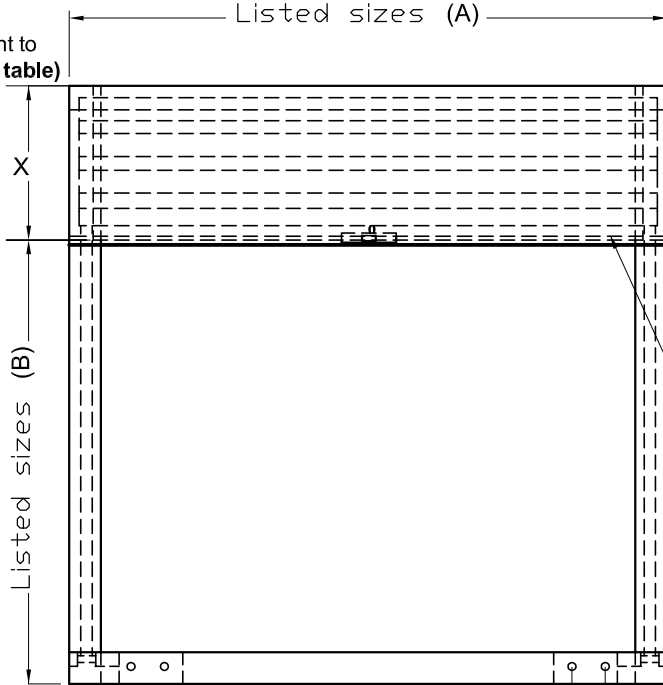
Engineer: \_\_\_\_\_

Contractor: \_\_\_\_\_

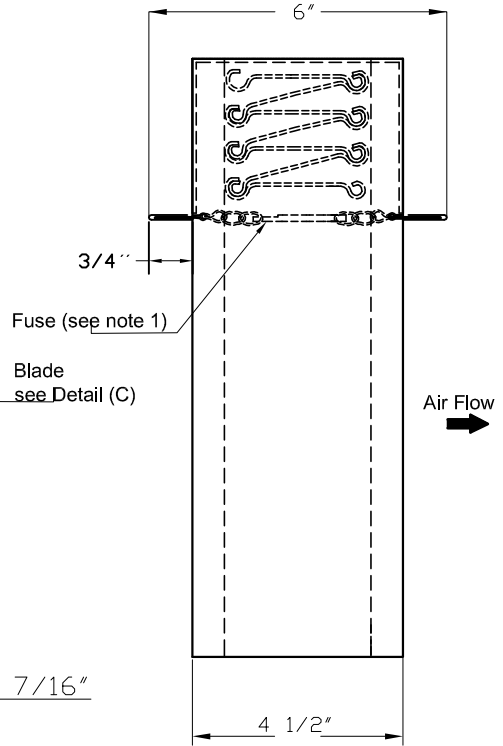
MODEL L-FDV-2

MODEL FIRE DAMPER - VERTICAL MOUNT

X it varies in agreement to size B (see table)

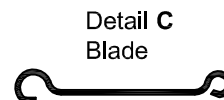


VERTICAL MOUNT



2 3/16" 1 7/16"

Listed size (B)	X=
	Inch
6"	1 13/32
8"	1 11/16
10"	1 31/32
12"	1 31/32
14"	2 1/4
16"	2 17/32
18"	2 13/16
20"	3 3/32
22"	3 3/8
24"	3 21/32
26"	3 15/16
28"	3 15/16
30"	4 7/32
32"	4 1/2



Finish Galvanized

Note 1: to use fuse of 165°F or fuse of 386°F  
 Note 2: Available in sizes with single section (A) x (B): 6"x6" to 22" x 32" different consulting engineering

Dimensions are in inches

MODEL L-FDV-2

**FRAME:** GALV. STEEL CAL. 20  
**BLADE:** GALV. STEEL CAL. 22

Job Name: \_\_\_\_\_  
 Location: \_\_\_\_\_

Architect: \_\_\_\_\_  
 Engineer: \_\_\_\_\_  
 Contractor: \_\_\_\_\_